

Rule Modifications – Under 12 (“Mini”)

Effective November 1, 2016

Upon speaking with many coaches and watching/officiating a lot of Under 12 games, two situations come to the fore as an issue for skill development and game flow. The following changes have been approved by the BNB Board of Directors and will be in place for the 2016-2017 season.

1. “DOUBLING AREA”

The first difficulty witnessed is the **“no double teaming”** rule as it pertains to dribble penetration and posting up within the key. There will often be an instantaneous double upon most dribble penetration scenarios given good defence dictates help comes hard to prevent a “key/paint touch”. Given this fact, we believe it is too much to ask young players who have been beat on defence to peel off to another player in the hopes that help will arrive. Additionally, this can be very difficult to officiate accurately and consistently.

The second scenario in which we see a problem is simple posting up of players in the key exploiting mismatches of undersized players... of course this is a great strategy to score/win, but we don’t think its necessarily going to promote team play with all players getting touches. With the ability of the defence to double this post up, we believe the ball will go in and out of the post to exploit this double team with everyone getting a touch... not simply a post-up, back down scenario.

It is for these two situations we are implementing an area in which double teaming will be allowed to occur in the game (See **Diagram A** below). We believe this will create normal game flow, increase the skill to find the open player upon penetration/post up, and to better prepare players for the nuances of the game moving forward. If we stick to this **“doubling area”** and not extend it, we will discourage coaches to trap all over the floor as a tactic. The “spirit of the rule” is to promote ball movement upon the arrival of help and to create a situation which is easier to manage from an officials’ vantage point.

Officials Implementation & Spirit of Rule

We do not want to create conflicts over the exact positioning of doubling with our coaches so if said double happens on, near or around the line we will let play continue as it is only there to promote the normal help in the flow of a game. If teams start doubling on a wing catch this will be an obvious violation. Essentially, any time a ball is in the key from a pass or dribble, there will be no stoppage for “any amount of player” guarding the ball. See Diagram A below, “Doubling Area” identified in grey.

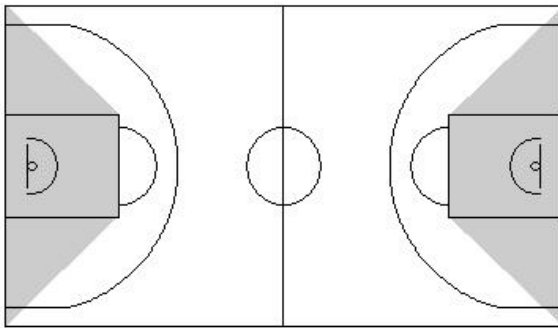


Diagram A – Grey shaded spaces are considered to be the acceptable “Doubling Area”.

2. “PROXIMITY RULE”

The second issue with our Under 12 game stems from coaches having players not defending the ball and all 4 players in the key...essentially playing a zone defence.

This is simply a tactic to ensure there is no dribble penetration and to force the other team to shoot an outside shot. The strategy has NOTHING to do with skill development from an offensive or defensive standpoint, except for maybe the offence shooting the open shot. At the subsequent levels of play, we certainly are not going to give players open shots and coaches will certainly want ball pressure from their defenders. This strategy is all about “only winning” which is counter to the LTAD model of development.

It is for these reasons, we are implementing a “**Proximity Rule**” as it pertains to the ball handler. The defender must be within at least one (1) meter of the ball handler once the ball is below the top of the semi-circle extended (See **Diagram B** below). The remaining players can be in “gap” or “deny” positions as coaches dictate for their style of play. We believe this will promote skill development in areas of ball handler decision making, on ball defence, gap and help defence, closeouts, etc. The intent of the rule is simply to have players get out of the key and learn how to defend and play, thus opening up the floor for a much better game product. For the most part, this would not impact many teams as they already “guard the ball” but it ensures all players get an even playing field of development.

Officials Implementation & Spirit of the Rule

We do not want officials to blow this down if a player is a meter and a half away from the ball... however, we simply do not want players backing off to the key as a tactic to avoid/stop penetration... the new “Doubling Area” will assist in having penetration stopped, thus the basket being protected. A simple voice command once in a while such as “get up” should be plenty to keep the flow going and all participants playing basketball. Coaches must encourage this rule to develop their players and not try to have players back off and put onus on the official to decipher whether it’s a zone or players just sagging off their player.

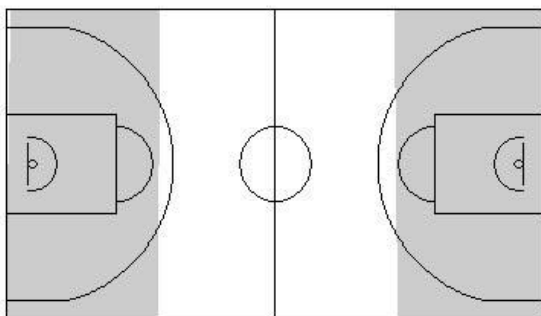


Diagram B – Proximity rule applies to grey shaded area.

These modifications are in place to grow the love of the game by making the Under 12 level much more enjoyable as it is typically our entry level for all participants. It is the hope that all stakeholders work together to promote the game properly to our youth... the key is to develop individual skills through a fun, team based environment.

For further information on these changes, please contact BNB's Technical Director, Neil Smith, at neil.smith@basketball.nb.ca.